

Michigan 4-H Youth Dairy Days

July 18-22, 2022

The Pavilion for Agriculture and Livestock Education
Michigan State University

<https://www.canr.msu.edu/events/michigan-4-h-youth-dairy-days>

Held in conjunction with the Michigan Dairy Expo



MSU is an affirmative action/equal opportunity employer. Michigan State University Extension programs and materials are open to all without regard to race, color, national origin, gender, gender identity, religion, age, height, weight, disability, political beliefs, sexual orientation, marital status, family status, or veteran status.

Michigan 4-H Youth Dairy Days will again be held in conjunction with the annual Michigan Dairy Expo at the Pavilion for Agriculture and Livestock Education at MSU. The mission of the Michigan Dairy Expo is to encourage and promote youth involvement in dairy activities, to showcase the Michigan dairy industry and to provide continuing education to the dairy industry in Michigan and nearby states. Dairy Days events are designed for young people who are interested in dairy cattle and the dairy industry. Keep the following in mind as you decide which events you want to enter and as you complete your entry form. Get ready for an exciting fun-filled time at Dairy Days!

- Dairy Days events are open to all Michigan youth who are between 8 and 19 years old by January 1, 2022.
- Many of the events are divided into divisions that are based on age. The events consist of novice (8 to 11, novice with limited experience), junior (9 to 14) and senior divisions (15 to 19).

How to Register

Information and registration instructions for all Dairy Day Youth activities can be found in this packet, including the State 4-H Dairy Quiz Bowl Contest, State 4-H Dairy Management Contest, State Youth Dairy Judging Contest, and 4-H Youth Dairy Show. Use the links to register for all events. Each individual youth participant will need a parent or guardian to complete the individual entry form found at: <https://form.jotform.com/221294830976060>

Coaches for each contest should complete the team entry form found at:
<https://form.jotform.com/221296289943064>

Payment for cattle entered in the 4-H Youth Dairy Show will be due at time of registration via credit or debit card here: https://commerce.cashnet.com/msu_3645. For other payment options, please contact Carla McLachlan at CarlaM@msu.edu. **All entry materials are due by June 28, 2022.**

Dairy Days Award Program and Celebration Picnic

The Dairy Days Award Program will take place on Thursday evening July 21, at 6:00 p.m. at the MSU Pavilion Auditorium and should conclude at approximately 8:00 p.m. All are welcome to attend the program.

Lodging

Camping is available at the Pavilion. Each campsite includes electricity hook up, but no direct water hook up is available. There are water sources and a dumpsite located nearby. Camping fees are \$20 per lot per day. At the end of the registration packet is a list of hotels within 10 miles of campus. This list is provided for informational purposes only and does not serve as an endorsement or recommendation for any of the hotels.

Schedule of Events

2022 MI Dairy Expo and 4-H Dairy Days (all times ET)

Monday, July 18

- 1:00 p.m. – 5:00 p.m. Cattle move-in begins. Dairy Days exhibitors must have cattle in place by Monday at 5:00 p.m.
Open show exhibitors are encouraged to arrive Monday and must be in place by Wednesday at 7:00 a.m.
NO early arrival allowed.
- 6:00 p.m. Cattle exhibiting in Michigan Dairy Days Youth Show must be checked in to the show office before 6:00 p.m. All showmanship exhibitors must check in by this time as well.
- 7:00 p.m. Dairy Youth Pizza Social - All Dairy Days participants are invited!!! (Show Arena – Bleacher Area)

Tuesday, July 19

- 7:30 a.m. Michigan Dairy Days 4-H Youth Show (beginning with Showmanship)
- 3:00 p.m. 4-H Dairy Management Contest Coaches Meeting
- 4:00 p.m. 4-H Dairy Management Contest
- 5:00 p.m. All final Quiz Bowl teams must be submitted in writing to the show office by 5 p.m. If no changes are submitted, teams will be those listed on the original entry form.
- 8:30 p.m. State Dairy Judging Coaches Meeting - Classroom B (Distribute shirts for Youth Judging Contest)

Wednesday, July 20

- 7:00 a.m. Open Show Cattle must be in place
- 7:45 a.m. – 3:00 p.m. State Youth Dairy Judging Contest
- 11:00 a.m. – 4:00 p.m. Open Show Cattle - Breed Association Entry Check-in at Classroom C
Cattle exhibiting in the Open Breed Shows must check their registration papers in by 4:00 p.m.
- 4:00 p.m. Close of ALL Open Show Entries
- 4:30 p.m. Michigan Livestock Expo – Sale-A-Bration (invitation only event)
- 6:00 p.m. The Party Barn will include games and fun for youth!! (Junior Show Shirts will be distributed.)
- 7:00 p.m. Quiz Bowl brackets for Novice and Junior divisions will be posted by the arena and Facebook
- 8:30 p.m. All-Michigan Open Show Exhibitor's Meeting (Classroom C)

Thursday, July 21

- 7:30 a.m. Dairy Youth Quiz Bowl Coaches Meeting
- 8:30 a.m. Dairy Youth Quiz Bowl Contest
- 2:00 p.m. MICHIGAN DAIRY EXPO OPEN BREED SHOWS
Ayrshire, Brown Swiss, Guernsey, Milking Shorthorns
All cows and heifers for above breeds are shown
- 6:00 p.m. Michigan Dairy Expo Celebration Picnic followed by Dairy Youth and 4-H Recognition Program
- 9:00 p.m. Ice Cream Social Celebrating Michigan's Dairy Industry

Friday, July 22

- 8:30 a.m. MICHIGAN DAIRY EXPO SHOWMANSHIP
Ring 1 Holstein Ring 2 Jersey Ring 3 – All Other Breeds
- 9:15 a.m. MICHIGAN DAIRY EXPO MILKING AND DRY COW CLASSES
Holsteins, Jerseys and Red and Whites
Ring 1 Holstein Cows Ring 2 Jersey Cows
Red and White Cows follow in first ring finished
- ~12:00 P.M. All-Breeds Pee-Wee Showmanship (Immediately after Cow classes finished)
- ~ 1:00 p.m. MICHIGAN DAIRY EXPO HEIFER CLASSES
Ring 1 Holstein Heifers Ring 2 Jersey Heifers
Red and White Heifers follow in first ring finished

Awards and Ribbons

Ribbons will be awarded to 4-H Youth Dairy Day participants in specific competitions based upon individual and team rankings. Award schedules for 4-H Youth Dairy Days Events can be found at the end of this packet. Award checks will be mailed after the completion of the Michigan Dairy Expo. Michigan 4-H Youth Dairy Days and Michigan Dairy Expo officials reserve the right to adjust the award scale contingent on the number of cattle exhibited, sponsors, and show expenses. Exhibitors must report any discrepancies in the awards to the State 4-H Dairy Office within 30 days of receipt for a correction to be properly made. Report discrepancies to Carla McLachlan at CarlaM@msu.edu. Premium payment should be deposited/cashed within 60 days. Checks held longer than 60 days will not be honored. Checks are typically mailed to participants by September 1.

High Rank Scholarship Award

Cash awards will be given to the **top two eligible junior and senior individuals** based on highest rankings in 3 of 4 events. Events include:

- Showmanship (Ranking)
- Dairy Judging Contest (Ranking)
- Dairy Quiz Bowl (Score on the written test for Seniors only and ranked by number of correctly answered questions in first 2 rounds)
- Dairy Management Contest (Ranked by number of correctly answered questions)

Ties will be broken by the highest ranking in the 4th contest, if both participants have completed 4 contests. If both participants did not compete in all 4 contests, the placings will be determined by the highest ranking of youth in an individual contest to be chosen at random. Winners will be announced at the Dairy Days Awards Program.

Any youth who has completed one or more semesters of secondary education with Animal or Dairy Science courses (university, college, community or junior college, ag tech program, etc.) is not eligible to be awarded the senior scholarship.

The highest ranking junior and senior individuals will be awarded \$1000.00 each. The second highest ranking junior and senior individuals will receive \$750.00. Individuals can only win the overall high rank award once as a junior and once as a senior. Beginning in 2012, the second highest rank award winner in the junior and senior division is eligible to win the overall high rank award in that specific division in the future and will be awarded \$250.00 if they are the high rank winner. All high rank awards are capped at \$1000.00 per individual in each age division.

Volunteers

If additional volunteers are needed to assist in Dairy Days activities, someone from the state office will reach out to coaches listed in registration information with specific requests for events, duties, days, and times. **All volunteers need to complete the VSP process (Silver or Gold) for their county.**

Regulations Common to All Events

Before attending Dairy Days and the Michigan Dairy Expo, participants, leaders and staff should become familiar with the following regulations.

1. Michigan State University reserves the right to reject entirely, or accept conditionally any entry, or application for entry, or to withdraw classification and prizes in any department upon the closing of entries whenever it, in its sole judgment determines that such action is in the best interests of, the Michigan Dairy Expo.
2. **Authority**—the 4-H Dairy Youth Extension Educator has authority to make all decisions within divisions in

accordance with these rules and regulations. All protests and complaints should be written, signed and lodged with the Extension Educator. If any person feels aggrieved by a decision of the Extension Educator, that person may appeal that decision to the 4-H dairy programming committee.

3. **Liability**—It is understood that all event participants, their principals and their agents or employees agree to make no claim against Michigan Dairy Expo, any official of the event or anyone acting by, for or through them, for loss, damage or injury to any property, animal or person resulting from any cause. All animals, exhibits, grounds and buildings will be under the entire control and management of Michigan State University, but neither Michigan State University nor any of its officials will in any case be held responsible for any loss or damage that may occur to any youth participating.
4. **Fraud**—The management reserves the right to withhold awards in any case in which it appears that the regulations have not been complied with, or that fraud or deception has been practiced or attempted.
5. Three age divisions will be offered for each contest (age determined as of 1/1/2022).
 - Novice: 8 to 11 years (participants are not eligible for overall award). A youth may only participate as a novice for three years. **Participation in 2021 contests will not count towards the three-year limit for novice participants. Participation in Michigan 4-H Youth Dairy Days from 2019 and before will be counted.**
 - Junior: 9 to 14 years
 - Senior: 15 to 19 years.
6. **A Novice division for the contests has been developed.** This division is designed for youth who are 8, 9, 10, and 11 years old and just beginning to compete. Stations/contests will be much simpler than in the junior and senior divisions. The goal of this division is to encourage continued involvement. A youth may participate in the novice division three times at Dairy Days (if age appropriate) before moving to the junior division. Youth can elect to participate in the junior division rather than the novice division but cannot participate in both the novice and junior divisions in the same year at 4-H Youth Dairy Days. Individual results from the novice division cannot be used for the determination of Overall High Rank Awards.
7. ***Multi-County teams need to practice together and register together on the County Team Entry Form. Incomplete teams will be combined by lottery at the coaches' meeting prior to the specific contest.***
8. Youth may compete in different age divisions for each contest should the youth, parents/guardians, coaches, and teammates agree. In doing so, the youth forfeits the their chance at the High Rank Award for either the Junior or Senior division for that year.
9. Any youth who has been enrolled in secondary education for one more semester and/or has completed one or more collegiate level classes in Animal or Dairy Science is not eligible to receive the high rank scholarship or place in the judging, management, or quiz bowl contents.
10. Michigan 4-H Youth Dairy Days will follow all MSU health and safety protocols for in-person events. It is the expectation that all participants and coaches will abide by the guidelines set forth by MSU for all contests. Should a participant or coach not follow guidelines have reminders and warnings, they will not be allowed to continue participation and may be asked to leave the event at their own expense. MSU health and safety protocols may change at any time and an update will be shared with registered coaches and youth participants as needed in a timely fashion.

Conduct Policy

1. Anyone participating in this MSU sponsored activity who is caught in the act of theft or vandalism, or caught with illegal drugs or alcohol, or who is involved in other such offenses, will immediately be sent home at their own expense. If it is determined by the staff, leaders or persons in charge of the activity that the offense warrants it, the offender will be turned over to the proper authorities.
2. Security of possessions is each person's responsibility. MSU is not responsible for lost items.
3. All participants are expected to follow the 4-H Youth Development Code of Conduct:

- The opportunity to participate in or attend 4-H activities is a privilege. All 4-H participants—youth, families, volunteers, and Extension staff—who participate in or attend any activity or event sponsored by the Michigan State University Extension 4-H Youth Development Program are expected to uphold the values of the Michigan 4-H program. All 4-H youth participants must conduct themselves according to the following standards that apply to all Michigan 4-H programs, including virtual programs, and interactions such as social media and internet engagement:
 1. **Create a Welcoming Environment for All.** Encourage everyone to fully participate in 4-H. Recognize that all people have skills and talents that can help others and improve the community. Though we will not always agree, we must disagree respectfully. When we disagree, try to understand why. Our first priority is to create a safe, inclusive space for learning, sharing, and collaboration that is welcoming to people from diverse backgrounds, cultures, and perspectives. Diversity includes, but is not limited to race, color, national origin, gender, gender identity, religion, age, height, weight, disability, political beliefs, sexual orientation, marital status, family status, or veteran status.
 2. **Bring Your Best Self.** Conduct yourself in a manner that reflects honesty, integrity, self-control, and self-direction. Accept the results and outcomes of 4-H activities and programs with grace and empathy for other participants. Accept the final opinions of judges and evaluators. Be open to new ideas, suggestions, and opinions of others.
 3. **Obey the Law.** Obey the laws of the locality, state, and nation and Michigan State University and Extension policies and guidelines. Commit no illegal acts. Do not possess, offer to others, or use alcohol, illegal drugs, marijuana, or tobacco products, which include e-pens, e-pipes, e-hookah, e-cigars, JUULs, vapes, vape pens, or other electronic nicotine delivery systems. Do not attend 4-H activities under the influence of alcohol or illegal substances. Do not possess or use weapons or firearms except as expressly permitted as part of supervised 4-H shooting sports programming. This includes dangerous or unauthorized materials such as explosives or similar items.
 4. **Honor Diversity—Yours and Others’.** Respect and uphold the rights and dignity of all persons with whom you interact as part of Michigan 4-H.
 5. **Create a Safe Environment.** Be kind and compassionate toward others. Be considerate and courteous of all persons and their property. Do not carelessly or intentionally harm or intimidate anyone in any way (verbally, mentally, physically, or emotionally). Do not insult, harass, or bully others or engage in other hostile behaviors, including sexual harassment, sexual assault, or sexual abuse. Abstain from sexual behavior and intimate physical/sexual contact in either public or private situations at an MSU Extension youth 4-H activity or event.
 6. **Be a Team Player.** Work cooperatively with all individuals involved in 4-H programs and activities. Be responsive to the reasonable requests of the person in charge such as volunteers and staff. Respect the integrity of the group and the group’s decisions.
 7. **Humane Treatment of Animals.** Treat animals humanely and provide appropriate animal care.
 8. **Participate Fully.** Participate in and contribute to planned programs, be on time, and follow through on assigned tasks/responsibilities in a manner that fosters the safety, well-being, and quality of the educational experience for self and others. Have fun!

Resources

The following are general resources that can be used to prepare for Dairy Days events. Content for contests may come from a variety of sources beyond those listed here:

Dairy Cattle Judging and Showing resources to consider:

Dairy Cattle Judging Techniques by George W. Trimberger (Available at Amazon and Nasco)

Hoard's Dairyman Magazine—reference guides available through Hoard's publications: <http://www.hoards.com>

Holstein Foundation: <http://www.holsteinfoundation.org>

University of Wisconsin Extension: (judging and showmanship materials): <https://fyi.uwex.edu/dairyouth/>

Virginia Tech: <http://www.vtdairy.dasc.vt.edu/> and <https://www.youth.dasc.vt.edu/>

Quiz Bowl resources to consider including:

Cornell: <https://4h.ansci.cornell.edu/animal-programs/dairy/dairy-quiz-bowl/>

NC State: https://projects.ncsu.edu/cals/an_sci/extension/dairy/4-H/quizbowl/quizbowlquestions.htm

Penn State: <https://extension.psu.edu/programs/4-h/projects/dairy/pennsylvania-dairy-quiz-bowl>

Management Contest links to consider:

NC State: https://projects.ncsu.edu/cals/an_sci/extension/dairy/4-H/quizbowl/quizbowlskillathonresources.htm

OSU: <https://union.osu.edu/program-areas/4-h-youth-development/study-guides-skillathon-information>

OSU: <http://www.geauga4h.org/dairy/index.htm>

General Dairy Science Information:

DAIReXNET: <https://dairy-cattle.extension.org/>

MSU Extension Dairy: <https://www.canr.msu.edu/dairy/>

Michigan 4-H Youth Dairy Cattle Judging Contest

The Michigan Youth Dairy Cattle Judging Contest will consist of individuals or teams of three or four members competing in novice, junior or senior divisions. All youth, regardless of past participation in national contests are encouraged to participate.

New for 2022: All participants will enter their placings via an electronic system in the ring after each class. Placing cards will not be used this year. Youth will record class placings on one sheet that will be used as a backup. More information will be provided prior to the contest in late June and early July and at the coaches' meeting the night before the contest. There will be students and staff in the ring to assist youth entering their electronic placings for each class the day of the contest. This electronic process will greatly improve the accuracy and speed of scoring the contest. National contests are moving towards these types of scoring systems.

Eight classes of cows and heifers will be judged. Classes will be selected from the following breeds, if available: Ayrshire, Brown Swiss, Guernsey, Holstein, Jersey, and Red and White. Fifteen minutes will be allowed to place each class of four animals, including making notes for oral reasons.

A novice division for the judging contest has been developed. This division is designed for youth who are 8, 9, 10, and 11 years old and just beginning to compete in the judging contest. Contestants will judge 4 classes and will not have to do oral reasons. A simple multiple choice and/or fill in the blank test about judging and cow parts will be given. The goal of this division is to encourage continued involvement in judging.

A youth may participate in the novice division of the judging contest three times at Dairy Days (if age appropriate) before moving to the junior division. Youth can elect to participate in the junior division rather than the novice division but cannot participate in both the novice and junior divisions in the same year at Dairy Days. Individual results from the novice division cannot be used for the determination of Overall High Rank Awards. All other judging contest rules apply.

In the junior division, scoring will be based on placing scores, reasons score for one set of oral reasons and identification of 25 cow parts. The cow parts portion of the contest will have a list of terms on the sheet and contestants must match the correct term with the correct labeled part. **All juniors are required to give one set of reasons. In the senior division, scoring will be based on placing scores and three sets of oral reasons.**

Ribbons will be awarded for the top 25 junior and senior individuals in this event. The top 25 seniors plus all contestants in this event who have competed previously at the national contest are eligible to participate in judging clinics and tryouts to determine the state teams. From these clinics, individuals will be chosen to compete in the fall contests. The final team assignment will be made following the final judging practice and is the responsibility of the 4-H Dairy Youth Extension Educator.

Counties must submit the County Team Entry Form with the entries. Coaches are encouraged to call and confirm their team's registration if there is some question. County leaders are also advised to bring their copy of the entry forms.

A coach's meeting will be held the evening before the contest (see schedule of events). All changes in team member make-up must be made at this meeting. **If a representative from your team is not able to attend this coaches meeting, all changes should be emailed to Dr. Joe Domecq at domecqjo@msu.edu by 5 p.m. the day before the contest.** Final registration and packets will be available for pickup on the morning of the contest.

Judging Contest Eligibility and Rules Summary

1. Eligibility for all State 4-H dairy contests are to be determined at the county level. If discrepancies appear on a state level, these will be the responsibility of the county involved.
2. A county may enter less than four contestants. The team score will be based on the total scores of the top three individuals on the county team.
3. Each county may enter one or more novice teams, one or more junior teams and one or more senior teams. Counties that are unable to get enough members for a team may pair up with other counties to form a multi-county team. **A county may have multiple teams or individual entries.**
4. While the contest is in progress, communication between contestants or contestants and coaches is **not** allowed (neither written nor verbal.) If reasons room monitors see or hear contestants communicating, contestants will be given one warning. At the second occurrence 25 points will be deducted from the score for that class. At the third offence a score of zero will be given for that class.
5. Neither coaches nor parents are allowed in the ring during the judging portion of the contest or in the reasons holding rooms.
6. Any youth who has completed an Animal or Dairy Evaluation course at the collegiate level is ineligible to compete as a team member or individual.
7. Youth age 19 as of 1/1/2022 are eligible for this contest; however, they may not be eligible to compete in National 4-H contests. Membership in a local 4-H program is also required for eligibility at the National 4-H contest.
8. **Continuing in 2022:** Shirts that identify which county a youth is enrolled in **will not be allowed during the dairy cattle judging contest.** 4-H Youth Dairy Days will provide shirts for contestants to wear for the day cattle judging contest. Only these shirts or other plain shirts with no identifying marks will be allowed for the dairy cattle judging contest.
9. **New for 2022:** All participants will receive a new padfolio (with 9" x 6" notepad) to use for taking notes and preparing reasons during the contest. Each youth can keep the padfolio at the conclusion of the contest. Youth will need to provide their own pen or pencil. Padfolios will be distributed the morning of the contest as youth enter the arena.

Scoring Guidelines-- Novice Division Judging

Scoring will be on the following basis:

1. Placing scores for 4 classes -- 50 points possible/class.
2. A multiple choice and/or fill in the blank test -- 50 points possible.

Scoring Guidelines-- Junior Division Judging

Scoring will be on the following basis:

1. Placing scores -- 50 points possible/class.
2. One set of oral reasons -- 50 points possible/class.
3. Identification of 25 key cow parts (50 points for correct identification and correct spelling). Key for cow parts is included with this packet. Only those parts listed on the key sheet will be considered correct for this contest. Remind youth to make sure they use only the terms listed on the key, other words or misspellings will be marked as wrong.

Scoring Guidelines-- Senior Division Judging

Scoring will be on the following basis:

1. Placing scores -- 50 points possible/class.
2. Three sets of oral reasons -- 50 points possible/class.

4-H Youth Dairy Quiz Bowl

Contest

The 4-H Youth Dairy Quiz Bowl competition tests the dairy knowledge of teams of youth. Teams are awarded points when questions are answered correctly. While the majority of questions will focus on dairy cattle health, a wide range of questions can be asked. A list of general resources and questions has been provided on pages 5 and 6. Ribbons and awards will be presented to the members of the top 5 teams in each division.

New for 2022: The team representing Michigan 4-H at the North American Dairy Quiz Bowl during NAILE (November 2022) in Louisville, Kentucky will be composed of four of the top eligible participants in the senior Quiz Bowl contest. Team members will be determined by age, eligibility to compete at the national contest, number of questions answered correctly during quiz bowl rounds, and score on the multiple-choice test used to seed the Senior teams. The top ten eligible individuals will be invited to additional practices, which will be held in August to determine the final team members and alternates for the North American Quiz Bowl Contest. Final team decision will be made in early September. Coaches listed on the registration paperwork for the top ten seniors will have the potential to continue coaching the national team and traveling to Louisville for the contest. Funds will be available to support team travel to NAILE.

All senior team members will complete a multiple-choice test starting at approximately 8:30AM when the novice contest starts. Youth will not be allowed to use any sources or reference materials during the test. No talking with teammates or coaches is permitted. There will be a staff person or volunteer not associated with any team available should a youth have questions or problems. The top three scores of the team will be used to determine the seeding for the senior contest that afternoon and will be posted as soon as results are tabulated. There will be no changes in how the rounds are carried out.

Top Ten Seniors: The ten seniors with the highest scores on the multiple-choice test, most correctly answered questions during rounds, and who are eligible to compete at the national contest will be invited to additional quiz bowl practices/games during August 2022. The four youth who attend the most additional practices and have the highest scores during additional practices/games will be invited to the national team. Two additional youth will be selected as alternates. Coaches listed on the registration paperwork for the top ten seniors will have the potential to continue coaching the national team and traveling to Louisville for the contest. Coaches will be contacted as the team is finalized.

Although it is possible that all national team members may be from the same county, the goal is to provide an opportunity for high performing youth to compete at the national level.

If a composite team cannot be assembled, the winning county team will earn the invitation to the national contest. Two of the original winning team members must be able to compete at the national contest to be eligible to move on to Louisville. Other youth who competed at the state contest but were not on the winning team may be substituted on the national team. If the winning team cannot send two of the original, eligible team members, then the second-place team will be invited to represent Michigan, but they must also have two of the original team members compete on the national team. If the second-place team is unable to do this, it will move to the third-place team. If there are not enough individuals from the top three teams who are eligible, Michigan will forfeit competing at the national contest that year.

Each county may enter one or more novice teams, one or more junior teams, and one or more senior teams. Novice contestants are 8 to 11 years old, junior contestants are ages 9 to 14 and seniors are ages 15 to 19. **Note: Contestants must reach these ages by January 1 of the current year.** Counties must submit the County Team Entry Form to the 4-H Dairy Youth Extension Educator with entries. Coaches are encouraged to confirm their team registration.

A mandatory coach's meeting will be held immediately prior to the contest. All coaches must attend. All coaches must turn in final listing of team members by 5:00 p.m. on Tuesday. If no changes are submitted, teams will be those listed on the original entry forms.

- A list of final teams will need to be submitted, at the latest, to the Show Office by 5 p.m. on Tuesday evening. If team lists are ready before this time, they may be emailed to elischer@msu.edu. If no updated forms are submitted by 5 p.m., the team listed on the original registration will be entered in the contest. No changes to teams will be made after this. Incomplete teams (less than 4 youth) will be randomly drawn and assembled by the 4-H Dairy Youth Extension Educator. If a youth scratches, teams of 3 will compete as such. Teams of 1 or 2 will be adjusted to create at least a team of 3 youth to compete.
- The list of Novice and Junior teams and seats for the first round of the contest will be posted outside the Arena and on the Michigan Dairy Youth Facebook page by 7 p.m. on Wednesday night. Novice will start the contest at 8:30AM followed by Junior and Senior Divisions. Approximate start times for Junior and Senior divisions will be posted at the Arena and via Facebook on the Michigan Dairy Youth page (<https://www.facebook.com/MichiganDairyYouthProgram/>).
- No materials (written, electronic, etc.) with information, questions, or other study aids may be brought into the contest room by anyone. If these materials are brought in, they will be taken away and returned after the contest is complete.
- Score keepers will be provided for each room by contest organizers.
- Questions cannot be recorded within the contest room by audio, handwritten, electronic, or other means. Anyone found copying or taking notes of any kind (paper, electronic, sharing questions and answers between rounds, etc.) will be removed from the room, not allowed to re-enter the rest of the day, and materials will be confiscated.
- Volunteers not associated with any teams will be assisting with the brackets and calling teams to rooms. The 4-H Dairy Youth Extension Educator will move between rooms to watch contest rounds and make sure rules are followed and enforced. Other content and contest experts may also be present to assist in monitoring rooms to ensure rules are followed and moderators, judges, timekeepers, and score keepers are treated with respect.
- No one except youth competing in the current round (NO coaches, spectators, volunteers, etc.) may challenge a question or answer based on content during any round. Dairy and animal science faculty and industry supporters are volunteering their time as judges and moderators – respect their knowledge and expertise during all contests. If there is a procedural error (e.g., time is not restarted, a bonus is missed by the score keeper, etc.) only the coach may respectfully signal the moderator or judge of the mistake.
- The number of toss-up questions per round will differ for each age group: 10 for Novice; 12 for Junior; and 14 for Senior. Individual True or False questions remain the same (1/team member for Novice and Juniors; 2/team member for Seniors).
- A brief coaches' meeting will be held at 7:30am on Thursday, with the first rounds of Quiz Bowl beginning at 8:30 am.

Team representing Michigan at the national contest: The ten seniors with the highest scores on the multiple-choice test, most correctly answered questions during rounds, and who are eligible to compete at the national contest will be invited to additional quiz bowl practices/games during August 2022. The four youth who attend the most additional practices and have the highest scores during additional practices/games will be invited to

the national team. Two additional youth will be selected as alternates. Coaches listed on the registration paperwork for the top ten seniors will have the potential to continue coaching the national team and traveling to Louisville for the contest. Coaches will be contacted as the team is finalized.

Although it is possible that all national team members may be from the same county, the goal is to provide an opportunity for high performing youth to compete at the national level.

If a composite team cannot be assembled, the winning county team will earn the invitation to the national contest. Two of the original winning team members must be able to compete at the national contest to be eligible to move on to Louisville. Other youth who competed at the state contest but were not on the winning team may be substituted on the national team. If the winning team cannot send two of the original, eligible team members, then the second-place team will be invited to represent Michigan, but they must also have two of the original team members compete on the national team. If the second-place team is unable to do this, it will move to the third-place team. If there are not enough individuals from the top three teams who are eligible, Michigan will forfeit competing at the national contest that year.

Requirements – Quiz Bowl

1. Any youth who has completed an Animal or Dairy science course at the collegiate level, an Animal or Dairy Science short course, online course Animal or Dairy Science, or AP Animal or Dairy Science course eligible for credits towards a college degree is ineligible to compete as team member. No individual entries are allowed, i.e. if a youth is the only eligible youth from a county to compete or a county has an incomplete team, a composite team will be created so every participant is on a team.
2. Each county may enter one or more novice teams, one or more, junior teams and one or more senior team in each division. A team may have four or three members and a coach. No more than two alternates may be entered as substitutes. Counties unable to get enough members for a team may pair up with other counties to form a multi-county team. Pre-entered teams will be allowed to compete (made up of youth from 1 or more counties). Late registrations will be assigned to teams by the 4-H Dairy Youth Extension Educator. Final approval of multi-county teams will be made by the 4-H Dairy Youth Extension Educator.
3. All teams should name a team captain.
4. Members who have participated in the North American Invitational Dairy Quiz Bowl contest in Louisville, Kentucky, **may** participate in the State Dairy Bowl contest; however, they will **not** be eligible for competition in the North American Dairy Quiz Bowl Contest.
5. Individuals not enrolled in 4-H may participate but are not eligible for national competition.

Procedures – Quiz Bowl

1. Teams will compete in a series of one-on-one quiz off double elimination contests until the top team is chosen. Some teams may be awarded a bye during the elimination as part of the assignment process.
2. Competition between teams will be in two parts:
Part A - Eight true/false questions covering a specific topic relating to the dairy industry will be asked of each senior team. Four questions will be asked of each novice and junior team. Each team member, in rotation, will be asked a question. Correct answers are worth two points with no deduction for incorrect answers. No teammate assistance may be offered or received. Questions may be reread only once. Answers must be started within 15 seconds of when the reading is completed. Points will be deducted if the team member does not offer some response. Silence will lead to a deduction, but incorrect answers will not.
Part B - A total of 14 toss-up questions will be asked of senior teams, 12 for juniors and 10 for novice. Contestants must buzz in for the right to answer the question.
 - a. The first team to signal must answer the question within 5 seconds after being acknowledged by the moderator.

- b. Correct answers are worth 5 points. Points will be deducted if the team member does not offer some response. Silence will lead to a deduction, but incorrect answers do not. No points are deducted for incorrect answers.
- c. Any team answering a question without being acknowledged will lose 10 points and the question will be dropped.
- d. Team members may not discuss toss-up questions.
- e. If an answer is incorrect, the other team has the opportunity to answer the question immediately without having it reread. If the moderator, by mistake, gives the correct answer after the first team member buzzes in and answers incorrectly but before the opposing team has the opportunity to answer the question, a new question will be asked only to the second team to correct the mistake. If a member of the second team answers correctly, those points are to be added to the individual's scores as per normal for the contest.
- f. If neither team can offer an answer to the question within 10 seconds, the moderator will give the answer and the question will be dropped. Neither team will forfeit points.
- g. When a signal is pushed before the question is completely read, the moderator will stop reading the question when the light goes on, and the person signaling may answer the question after being acknowledged. If correct, the team will receive credit. If the answer is incorrect or incomplete, the judge may not ask the contestant to explain the answer. The question will then be completely reread and the other team will have the opportunity to answer it.
- h. A bonus question will be asked after three different team members have correctly answered a toss-up question. The answers to the bonus question must come from the team captain. The team may work together in answering the bonus question.
- i. Bonus questions are not passed to the other team if an incomplete or incorrect answer is given.
- j. All bonus questions will be worth five points for each correct response. If three responses are required, maximum value is 15 points.
3. If a round ends with a tie, there will be two sets of three additional toss-up questions for teams to buzz in for. If at the end of these two rounds the teams remain tied, there will be single, "sudden death" buzz in questions asked until one team wins. No bonus questions will awarded during the tie breaking questions.
4. The majority of questions will relate to dairy cattle health. Remaining question topics can come from any area within the dairy industry.
5. Answers and interpretations of questions will be the sole responsibility and final recall of the judges.
- a. A team member will have the privilege of asking the judges' panel to verify an answer that they feel is correct.
- b. No one except youth competing in the current round (NO coaches, spectators, volunteers, etc.) may challenge a question or answer based on content during any round.** Dairy and animal science faculty and industry supporters are volunteering their time as judges and moderators – respect their knowledge and expertise during all contests. If there is a procedural error (e.g., time is not restarted, a bonus is missed by the score keeper, etc.) **only the coach may respectfully signal the moderator or judge of the mistake.**
6. Spectators in the room may not challenge or comment on a question or the decisions of the moderator or judge during the contest. If a challenge or comment is made, the spectator's team will have the point value of that question deducted; up to 15 points may be deducted.
7. Any coach or spectator who is disruptive or disrespectful to the moderators and judges will be given one warning. After receiving one warning in any room, the spectator or coach will not be allowed to reenter any contest room for the remainder of the event. Moderators and judges volunteer their time and expertise to make this an educational, valuable, and enjoyable event for Michigan youth, thus need to be treated respectfully.
8. Any question or area not covered by these rules will be decided by the 4-H Dairy Youth Extension Educator. All decisions are final.
9. **Once a team has been called to a room to compete, the team has 5 minutes to be seated and ready for competition. Any team not ready to compete will forfeit the round.**
10. Final team placing will be determined by a double elimination process. Each team will have an opportunity

to compete in two rounds. The first round will be against another team that has not previously played. The second round will be against either a winning or a losing team, depending on the result of the first contest. A second loss eliminates a team from competition. In case of a team receiving a bye in the first round, the team will play a winning team from the first round and advance either to the next winners or losers round.

11. Youth age 19 as of 1/1/2022 are eligible for this contest; however, they may not be eligible to compete in National 4-H contests.

The 4-H Dairy Management Contest

The Dairy Management Contest tests the general dairy knowledge of contestants through displaying and using skills that the participant has learned. Individuals will rotate through a series of stations on a variety of dairy management topics. At each station participants may perform tasks, mark an answer to a question, or present an oral answer to a judge. Arrangements will be made to accommodate contestants needing assistance with reading and/or writing. These requests must be made prior to the contest. The winning senior team will be invited to participate in the National Junior Dairy Management Contest in Harrisburg, PA in September. The invited team must let the 4-H Dairy Youth Extension Educator know by August 14 and provide a \$400.00 deposit if they plan to participate. The deposit and \$500.00 award is available to support team travel to the contest in Pennsylvania. **If the team does not travel to the contest the deposit will not be returned. If no deposit is made by August 14, the next highest placing team will be given the opportunity to participate under the same guidelines.**

GENERAL RULES – MANAGEMENT CONTEST

1. The contest will consist of a novice, junior and senior division.
2. Individuals and teams can compete. A team consists of 3 or 4 members. Counties unable to field a complete team can combine with other counties to form teams. Pre-entered teams will be allowed to compete (made up of youth from 1 or more counties). Late registrations will be assigned to teams by the 4-H Dairy Youth Extension Educator during the coaches meeting prior to the contest. Final approval of multi-county teams will be made by the 4-H Dairy Youth Extension Educator.
3. Team scores will be calculated by dropping the lowest of the 4 team member scores. Teams of 3 will not have a drop score. A total score will then be calculated for each team using the 3 highest scores. The team with the highest total will win the contest.
4. Top 5 teams and individuals will be recognized in the novice, junior and senior divisions.
5. Ties will be broken by using team or individual scores on Station 6. The highest score on Station 6 will be the winner. If the contest is still a tie after evaluating Station 6 scores, then the scores from station 5 will be used. Judges will continue through the stations in this manner until the tie is broken.
6. No talking between contestants is allowed in the contest area. Any contestant talking will receive a warning. A second warning will result in the deduction of 10 points. A third warning will result in disqualification from the contest.
7. Any youth who has completed an Animal or Dairy Science course at the collegiate level, an Animal or Dairy Science short course, online course Animal or Dairy Science, or AP Animal or Dairy Science course eligible for credits towards a college degree is ineligible to compete as team member. This individual may compete as an individual but will not be ranked among the top 5 individual high scores at the contest and will not be eligible to compete in national contests.
8. Youth age 19 as of 1/1/2022 are eligible for this contest, however, they may not be eligible to compete in National 4-H contests. Youth members of the winning team must be 4-H members to compete at the national contests.

A mandatory coach's meeting will be held prior to the contest at a listed in the Dairy Days schedule. Teams and individuals must pre-register for the contest with the Dairy Youth Office. Team start times will be assigned at this meeting. A whole team should start the contest at one time. All questions, concerns, and complaints during and after the contest are to be brought to the attention of the 4-H Dairy Youth Extension Educator.

The Senior Division – Management Contest

The senior contest will consist of 10 stations. At these stations' participants will be expected to demonstrate a wide depth and breadth of knowledge. All stations will be worth 10 points. Answers for each station will be marked on a Scantron card. Topics for the 10 stations in the senior contest may be selected from the following list. Other topics not on this list may be part of the contest.

- | | |
|--|---|
| 1. Reading and analyzing DHIA records | 12. Spanish terminology for dairy farms |
| 2. Identifying feeds and testing their quality | 13. Reproductive anatomy |
| 3. Body condition scoring | 14. Evaluating cattle confirmation |
| 4. Identifying and proper interventions for mastitis | 15. Hoof care |
| 5. Proper milking procedure | 16. General cow anatomy |
| 6. Caring for a newborn calf | 17. Evaluating cow welfare |
| 7. Proper procedure for AI | 18. Digestive anatomy |
| 8. Sire selection using cattle evaluation skills | 19. Evaluating cow behavior |
| 9. Properly administering medications to cattle | 20. Cow natural history & evolution |
| 10. Culling decisions | 21. Gait scoring |
| 11. Dairy product evaluation | 22. Cow comfort |

The Junior Division– Management Contest

The junior contest will consist of 8 stations. Answers for each station will be marked on a Scantron card. All stations are worth 10 points. The 8 stations may be selected from the following list. Other topics not on this list may be part of the contest.

- | | |
|--|--------------------------------------|
| 1. Identifying the parts of the cow | 11. Causes and detection of mastitis |
| 2. Identifying breeds of dairy cattle | 12. Body condition scoring |
| 3. Identifying feed ingredients | 13. Culling decisions |
| 4. Detecting heat in cattle and identifying AI equipment | 14. Dairy products identification |
| 5. Administering medication to cattle | 15. Evaluating cattle confirmation |
| 6. Care of a newborn calf | 16. Evaluating welfare |
| 7. Reading pedigree records | 17. Cow comfort |
| 8. Reading DHIA records | 18. Cow behavior |
| 9. The 4-H pledge | 19. Parlor systems identification |
| 10. Placing a halter on a cow/tying a slip knot | |

The Novice Division – Management Contest

A Novice division for the management contest has been developed. This division is designed for youth who are 8, 9, 10, and 11 years old and just beginning to compete. Stations will be much simpler than in the junior and senior divisions of management contest and will not focus on any specific area of dairy production. The goal of this division is to encourage continued involvement. There will be 6 simple stations in the novice division; each station is worth 10 points.

A youth may participate in the novice division three times at Dairy Days (if age appropriate) before moving to the junior division. Youth can elect to participate in the junior division rather than the novice division but cannot participate in both the novice and junior divisions in the same year at Dairy Days. Individual results from the novice division cannot be used for the determination of Overall High Rank Awards. All other management contest rules apply. Each county may enter one or more novice teams, one or more junior teams, and one or more senior teams.

Educational Contest Awards

2022 MI 4H Dairy Days Awards

July 18-22, 2022

Educational Youth Events

Class Name	1	2	3	4	5
Dairy Judging Contest					
Top 5 Junior Individuals (9-15 yrs old)	\$ 40.00	\$ 20.00	\$ 15.00	\$ 10.00	\$ 5.00
Top 5 Senior Individuals (16-19 yrs old)	\$ 40.00	\$ 20.00	\$ 15.00	\$ 10.00	\$ 5.00
Top 5 Novice Individuals (9 to 12 yrs)	\$ 40.00	\$ 20.00	\$ 15.00	\$ 10.00	\$ 5.00
Top 5 Junior Teams	\$ 45.00	\$ 35.00	\$ 25.00	\$ 20.00	\$ 20.00
Top 5 Senior Teams	\$ 45.00	\$ 35.00	\$ 25.00	\$ 20.00	\$ 20.00
Top 5 Novice Teams	\$ 45.00	\$ 35.00	\$ 25.00	\$ 20.00	\$ 20.00
Dairy Management Contest					
Top 5 Junior Individuals	\$ 40.00	\$ 20.00	\$ 15.00	\$ 10.00	\$ 5.00
Top 5 Senior Individuals	\$ 40.00	\$ 20.00	\$ 15.00	\$ 10.00	\$ 5.00
Top 5 Novice Individuals	\$ 40.00	\$ 20.00	\$ 15.00	\$ 10.00	\$ 5.00
Top 5 Junior Teams	\$ 45.00	\$ 35.00	\$ 25.00	\$ 20.00	\$ 20.00
Top 5 Senior Teams	\$ 45.00	\$ 35.00	\$ 25.00	\$ 20.00	\$ 20.00
Top 5 Novice Teams	\$ 45.00	\$ 35.00	\$ 25.00	\$ 20.00	\$ 20.00
Travel Awards Top Team	\$ 500.00				
Dairy Quiz Bowl Contest					
Top 5 Junior Teams	\$ 80.00	\$ 70.00	\$ 60.00	\$ 50.00	\$ 40.00
Top 5 Senior Teams	\$ 80.00	\$ 70.00	\$ 60.00	\$ 50.00	\$ 40.00
Top 5 Novice Teams	\$ 80.00	\$ 70.00	\$ 60.00	\$ 50.00	\$ 40.00
High Rank Award					
Junior Exhibitor	\$1,000.00	\$ 750.00			
Senior Exhibitor	\$1,000.00	\$ 750.00			

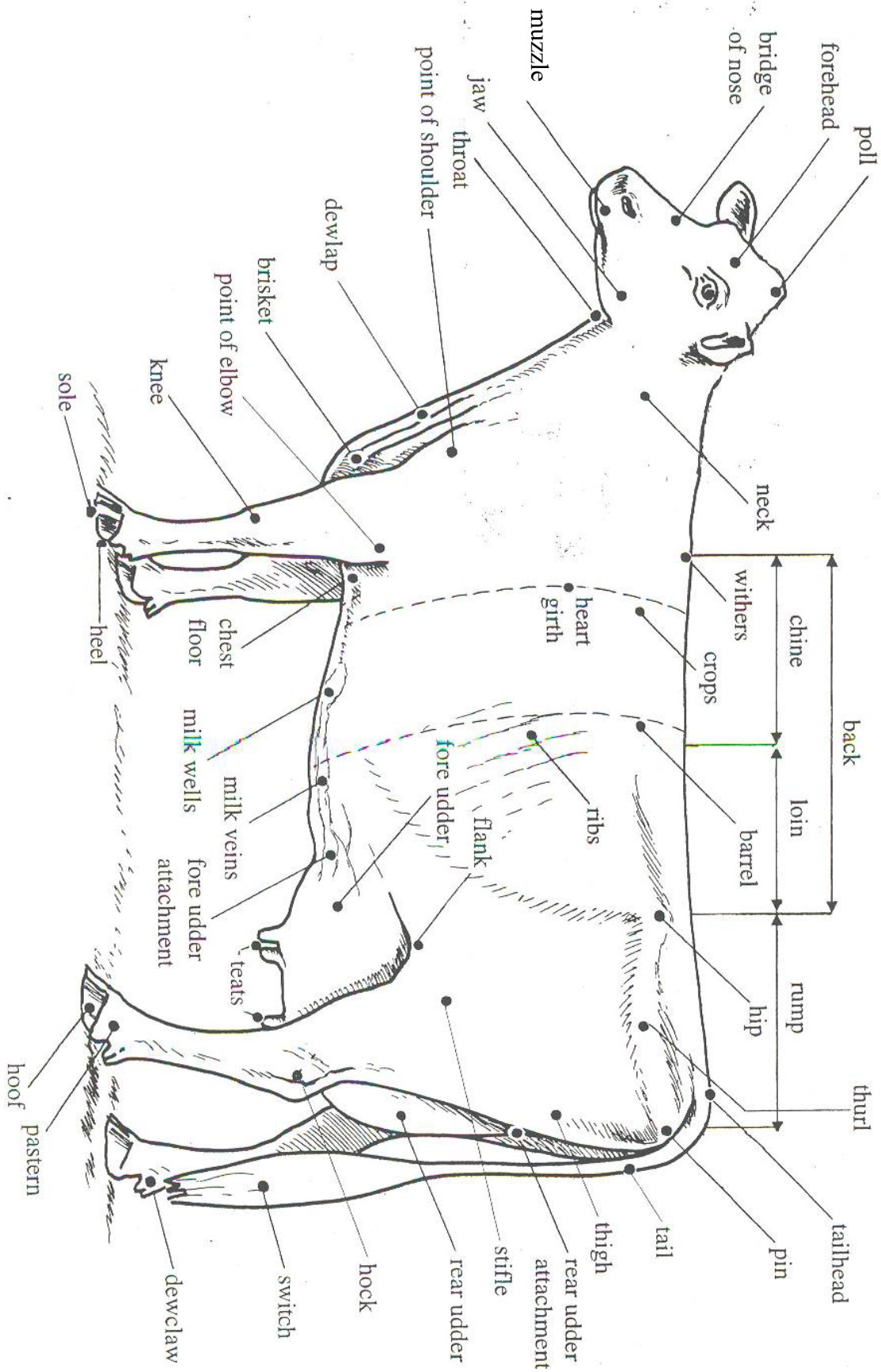
Educational Awards are subject to adjustment contingent on the number of participants, sponsors and event expenses.

Michigan Livestock Expo

The Michigan Livestock Expo Sale-abration will be held at the MSU Pavilion during the MI Dairy Expo. Michigan agriculture commodity groups will be hosting a reception featuring Michigan products at 4:30 p.m. on Wednesday, July 21. This VIP reception is to be held immediately before the sale on Wednesday afternoon for government dignities, industry representatives and agricultural supporters. Business casual dress is suggested for the reception.

Youth who participated in the 4-H Youth Dairy Days will be included in the Sale-abration. The Overall Champion Showperson, as well as the exhibitors of the Overall Junior Champion Female and the Overall Champion Female will be the representatives in the sale. Youth participants are encouraged to be prepared with a clean set of show whites for the Sale-abration event.

PARTS OF A DAIRY COW



Michigan 4-H Dairy Days

Youth Show

Michigan Dairy Expo will host both the Michigan 4-H Dairy Youth Show on Tuesday and open breed shows on Thursday and Friday. Animals that will be exhibited in the open shows need to be entered with the open show entry forms, which are separate from the youth show forms. Michigan 4-H Youth Dairy Days will not handle or forward open show entries. Entry information for the open show will be shared as soon as it is available. Animals that will be exhibited in both the youth (Tuesday) and open shows (Thursday and Friday) must fill out both sets of entry forms.

All cattle exhibiting at the MI 4-H Dairy Days Youth Show must meet the requirements for livestock exhibition as presented by the MI Department of Agriculture. All in-state cattle moving to a fair, exhibition, show authority, or sale are required to have an official Radio Frequency Identification (RFID) Device ear tag. All cattle must be identified with official RFID ear tags prior to movement from a premises. Official identification tags are premises-specific and may not be transferred to other premises or used on cattle not included in the herd on the premises to which the tags were issued. Health Standards (Revised January 2011 - replaces all previous editions) are set by the Michigan Department of Agriculture, P.O. Box 30017, Lansing, MI 48909; Animal Industry Division: (517) 373-1077.

Rules and Regulations

The Michigan 4-H Youth Dairy Days Show is open to all Michigan youth ages 8 to 19 as of January 1, 2022. Each youth is invited to bring up to five animals to this event. All exhibitors must show the animals they enter unless special permission is given by the show superintendent (Joe Domecq 517-353-7855 or domecqjo@msu.edu). Each animal can be shown in only one of the following breeds: Ayrshire, Brown Swiss, Guernsey, Holstein, Jersey, Milking Shorthorn, and Red and White. Animals need not be registered to be exhibited in this show. Animals participating in the Red and White Dairy Cattle show must be red and white in color. Youth do not have to own the animals they show. A Dairy Days animal entry form is required for each youth bringing animals. Dairy Days youth exhibitors who are not country 4-H members are required to complete the Media/Medical release form and send it with your entries. (Current country 4-H members do not need to complete the media/medical release). All Dairy Days participants will be expected to abide by the 4-H Code of Conduct on pages 5-6 of this book. The show will consist of showmanship classes and breed classes. Youth are allowed to show a total of five head with no more than one entered in a single class. An animal may be exhibited in only one breed division (i.e., Red & White cattle that are eligible for the Holstein show may only be entered in one breed).

- All exhibitors must show their own animals unless special permission is given by the show superintendent.
- There is no limit to the number of animals that may be brought from any one county.
- Youth entrants must be Michigan residents.
- Exhibitors are to fit, show and take care of their own exhibits except under special circumstances determined by the superintendent.
- The Supreme Grand Champion, Supreme Junior Champion and Supreme Grand Showperson are eligible to fill slots in the Sale-abrication sale on Wednesday evening. A Dairy Days participant can only fill one of the dairy lots in the auction each year. If an individual is selected for more than one lot, the individual will select the lot they wish to sell, and the reserve of the other lot will sell.

Showmanship

In the showmanship classes, the person showing the animal is evaluated. Youth will be judged on their individual appearance and behavior, preparation of the animal for show, skill with which the animal is presented, and the youth's general knowledge of their animal. Youth will compete against other youth in the same age division regardless of breed of animal shown. Youth do not have to own the animals they show. However, youth must use an animal that is exhibited in one of the breed classes; an animal may only compete in showmanship one time. Judges will reserve the right to dismiss any exhibitor from the ring. Age divisions will be announced on show day.

All Dairy Days youth exhibitors of animals are automatically entered in showmanship. If you do not own an animal but are planning to exhibit in showmanship, please complete the Dairy Days Entry form and mark Showmanship. ALL DAIRY DAYS EXHIBITORS MUST CONFIRM THEIR ENTRY IN SHOWMANSHIP at check in the evening before the show. Classes will be divided equally according to age and will be announced on show day. Youth showmanship participants do not need to own the animal they exhibit in showmanship.

Supreme Grand Showperson: All class winners are eligible to compete for the Supreme Grand Showperson of Dairy Days. The class will be held at the conclusion of all showmanship classes. The winner will be announced at the end of the all breed shows.

The Dairy Days exhibitor that earns supreme grand showmanship will earn a slot in the Sale-Abration auction to be held on Wednesday. The individual will be selling an appropriate dairy product in lieu of the actual animal. (This item will be supplied by Dairy Days.) The exhibitor will earn no more than \$1,000 from the Sale-Abration. Any monies generated over that amount will accumulate in a scholarship, premium, and statewide dairy programming fund.

Breed Classes

In the breed classes, the animal is evaluated. Animals will compete against other animals of the same breed and age group. Judging will be based on the animal's conformation traits and the exhibitor's presentation of the animal in the class. Ribbons and trophies will be awarded.

ONLY one to one changes to entries will be allowed by each exhibitor and must be completed prior to Monday, July 18, 2022 at 5 p.m. NO changes will be accepted after this time. Entry fees may not be transferred to another exhibitor. Be sure to enter all eligible classes and list the CORRECT animal birth date.

ALL ANIMALS MUST HAVE AN RFID TAG. ANY ANIMAL WITHOUT A RFID TAG WILL BE EXCUSED FROM THE FACILITY.

All cattle entered for the 4-H Youth Dairy Days Show must be checked in on Monday. All youth must confirm their entry into showmanship. Failure to check in entries and confirm showmanship by 5:00 p.m. on Friday will disqualify youth from the Dairy Days Youth Show.

Breeds: Holstein, Red & White Holstein, Jersey, Guernsey, Brown Swiss, Ayrshire, Milking Shorthorn. The following class numbers will be necessary to complete the online entry form. Please use this list as a reference while completing the individual youth entry. Note: Group classes will be entered upon arrival at the Pavilion on 7/18/22.

1. SPRING HEIFER CALF, Born March 1 - May 31, 2022
2. WINTER HEIFER CALF, Born December 1, 2021 - February 28, 2022
3. FALL HEIFER CALF, Born September 1 - November 30, 2021
4. SUMMER YEARLING HEIFER, Born June 1- August 31, 2021
5. SPRING YEARLING HEIFER, Born March 1 - May 31, 2021
6. WINTER YEARLING HEIFER, Born December 1, 2020 - February 29, 2021
7. FALL YEARLING HEIFER, Born September 1 - November 30, 2020
8. JUNIOR & RESERVE JUNIOR CHAMPION - Classes 1-7, first and second place animals will be considered.
9. FALL YEARLING in Milk, Born September 1 - November 30, 2020
10. JUNIOR TWO-YEAR-OLD COW, Born March 1, 2020 - August 31, 2020
11. SENIOR TWO-YEAR-OLD COW, Born September 1, 2019 - February 28, 2020
30. COUNTY DAIRY HERD: Four with not more than one animal owned by any individual (may be more than one breed but county may enter only one county herd in the show to represent the entire county exhibit). Enter this class on show day.
12. JR & SR THREE-YEAR-OLD COW, Born September 1, 2018 - August 31, 2019
13. FOUR YEAR OLD COW, Born September 1, 2017 - August 31, 2018
14. AGED COW, Born before September 1, 2017
15. DRY 3 & 4 YEAR OLD COW, Born September 1, 2017 - December 31, 2018
16. DRY AGED COW, Born before September 1, 2017
17. SENIOR AND RESERVE SENIOR CHAMPION FEMALE, Classes 9-15, first and second place animals will be considered
18. GRAND AND RESERVE GRAND CHAMPION FEMALE, Selection to be made from Junior and Senior Champions
19. THREE BEST FEMALES, Three females owned by one exhibitor
20. DAM AND DAUGHTER, Cow with one of her daughters
21. PRODUCE OF DAM, Two daughters from the same dam

Cattle Release

Cattle that will only be shown in the Michigan 4-H Youth Dairy Days Show will be released any time after the completion of the show on Tuesday.

4-H Youth Dairy Days Awards

	1st	2nd	3rd	4th	5th	6th	7th	8th	9th	10th
--	-----	-----	-----	-----	-----	-----	-----	-----	-----	------

Dairy Day classes that have 1-5 animal exhibited will use this scale

DD A:	\$20	\$18	\$15	\$10						
-------	------	------	------	------	--	--	--	--	--	--

Dairy Day classes that have 6-11 animals exhibited will use this scale

DD B:	\$20	\$18	\$15	\$10	\$5	\$5	\$5	\$5		
-------	------	------	------	------	-----	-----	-----	-----	--	--

Dairy Day showmanship classes

DD C:	\$20	\$18	\$15	\$10	\$10	\$10	\$5	\$5	\$5	\$5
-------	------	------	------	------	------	------	-----	-----	-----	-----

Michigan 4-H Youth Dairy Program has the right to adjust the award scale contingent on the number of cattle exhibited, sponsors, and show expenses. No premiums will be paid for group classes.

Individual Exhibitor Entry Form – 4-H Youth Dairy Days

DUE: June 28, 2022

Every individual who will be participating in Dairy Days activities must have a parent or guardian complete the individual entry forms. This online form will also include entry for all cattle for the 4-H Youth Dairy Show (Tuesday): <https://form.jotform.com/221294830976060>

Payment for camping sites and cattle entry fee must be paid via credit or debit card here:

https://commerce.cashnet.com/msu_3645. For additional payment options, please contact Carla McLachlan at CarlaM@msu.edu

Team Entry Form completed by Coaches – 4-H Youth Dairy Days

DUE: June 28, 2022

Coaches must complete team forms at this link: <https://form.jotform.com/221296289943064>

Hotels near MSU campus in East Lansing

This list is for informational purposes only and does not imply an endorsement or recommendation of any of the hotels listed. All hotels below are within a 10 mile radius of campus. Please see each website for price point, reservations, and contact information.

EAST LANSING

- Candlewood Suites - https://www.ihg.com/candlewood/hotels/us/en/lansing/lanmu/hoteldetail?cm_mmc=GoogleMaps- -CW- -US- -LANMUThe
- The Graduate - <https://www.graduatehotels.com/east-lansing/>
- Springhill Suites - <https://www.marriott.com/hotels/travel/lan-sl-springhill-suites-east-lansing-university-area/?scid=bb1a189a-fec3-4d19-a255-54ba596febe2>
- Marriott - <https://www.marriott.com/en-us/hotels/lan-ema-marriott-east-lansing-at-university-place/overview/>
- Quality Inn University - <https://www.choicehotels.com/michigan/lansing/quality-inn-hotels/mi030>
- Clarion Pointe East Lansing University Area - <https://www.choicehotels.com/michigan/east-lansing/clarion-hotels/mi552>
- Residence Inn East Lansing - <https://www.marriott.com/en-us/hotels/lan-el-residence-inn-east-lansing/overview/>
- Hampton Inn East Lansing - <https://www.hilton.com/en/hotels/lan-ethx-hampton-east-lansing/>
- Holiday Inn Express & Suites East Lansing - https://www.ihg.com/holidayinnexpress/hotels/us/en/east-lansing/lan-ll/hoteldetail?cm_mmc=GoogleMaps- -EX- -US- -LANLL

LANSING

- Red Roof Inn East Lansing - <https://www.redroof.com/property/mi/lansing/RR1029>
- Courtyard Lansing - <https://www.marriott.com/hotels/travel/lan-yc-courtyard-lansing/>
- Fairfield Inn & Suites at Eastwood - <https://www.marriott.com/hotels/travel/lan-ft-fairfield-inn-and-suites-lansing-at-eastwood/>
- Hyatt Place Lansing – East - https://www.hyatt.com/en-US/hotel/michigan/hyatt-place-lansing-east/lan-zi?src=corp_lclb_gmb_seo_lan-zi
- Courtyard Lansing Downtown - <https://www.marriott.com/hotels/travel/lan-cl-courtyard-lansing-downtown/>
- Radisson Hotel Lansing at the Capitol - <https://www.radissonhotelsamericas.com/en-us/hotels/radisson-lansing-state-capitol?cid=a:se+b:gmb+c:amer+i:local+e:rad+d:us+h:LANSING#>

OKEMOS

- Holiday Inn Express & Suites Okemos – University Area - https://www.ihg.com/holidayinnexpress/hotels/us/en/okemos/lan-lo/hoteldetail?cm_mmc=GoogleMaps- -EX- -US- -LANLO
- Courtyard East Lansing Okemos - <https://www.marriott.com/hotels/travel/lan-co-courtyard-east-lansing-okemos/>
- Staybridge Suites - <https://www.ihg.com/staybridge/hotels/us/en/okemos/lan-om/hoteldetail>
- Hampton Inn & Suites East Lansing/Okemos - <https://www.hilton.com/en/hotels/lan-okhx-hampton-suites-east-lansing-okemos/>
- Fairfield Inn East Lansing - <https://www.marriott.com/hotels/travel/lan-fi-fairfield-inn-east-lansing/>

- Best Western Okemos/East Lansing Hotel & Suites - https://www.bestwestern.com/en_US/book/hotels-in-okemos/best-western-okemos-east-lansing-hotel-suites/propertyCode.23172.html
- Comfort Inn Okemos-East Lansing (<https://www.choicehotels.com/michigan/okemos/comfort-inn-hotels/mi306?mc=llgoxxpx>)

Michigan 4-H Youth Authorization and Acknowledgment Form

To be completed by youth and parents/guardians for non-4-H members participating in Michigan 4-H Youth Dairy Days 2022

Participant Name: _____

County of 4-H Participation: _____ Program Year: 2021 – 2022

Parent/Guardian Signature: _____ Date: _____
Participant must sign if over 18.

Media Release

I authorize Michigan State University Extension/4-H to record my image and/or voice for use by Michigan State University Extension or its assignees in research, education, and promotional programs. I understand and agree that these audio, video, film, and/or print images may be edited, duplicated, distributed, reproduced, broadcasted, and/or reformatted in any form and manner without payment of fees in perpetuity.

Parent/Guardian Signature: _____ Date: _____
Participant must sign if over 18.

Official Medical Treatment Authorization

I recognize that while attending this program, medical treatment on an emergency basis may be necessary for my child, and I further recognize that volunteers or staff overseeing the program may be unable to contact me for my consent for emergency medical care. I do hereby consent in advance to such emergency care, including hospital care, as may be deemed necessary under the circumstances and to assume the expenses of such care. I also authorize the medical facility to release any and all information required to complete insurance claims and also authorize insurance payment directly to the medical facility.

Parent/Guardian Signature: _____ Date: _____
Participant must sign if over 18